



ostap001 University of Minnesota <ostap001@umn.edu>

Press Release 2 of 2

2 messages

Howard Oransky <horansky@umn.edu>
To: Mark Ostapchuk <ostap001@umn.edu>

Thu, Dec 15, 2016 at 2:22 PM



Arlene Burke-Morgan, *Transcend*, 2016, acrylic on canvas over panel
10 x10 in., Photo: Renee Yamada

Form + Content Gallery 10th Anniversary Exhibition

Form + Content Gallery celebrates its first ten years (2007 – 2017) with a group exhibition of artworks by former and current artist members of the gallery.

January 26 – March 4, 2017

Opening Reception

Saturday, January 28

6:00 – 8:00 pm

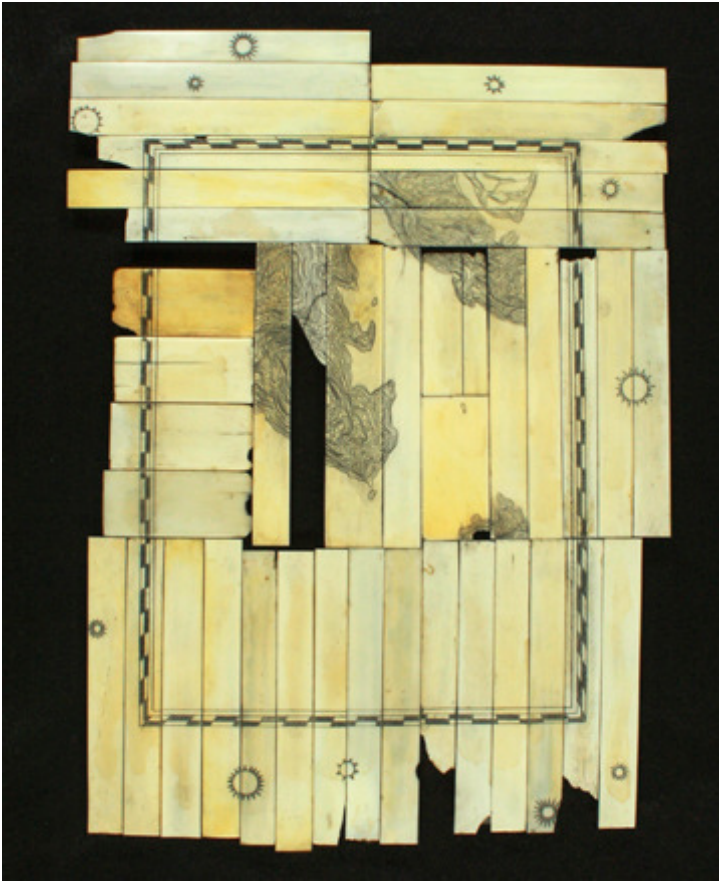
free and open to the public



Crescent Collective (Laura Bigger, Artemis Etsen & Teréz Iacovino)
Landscape I, 2016, Inkjet print, 10 x 10 in.

Where

Form+Content Gallery
Whitney Square Building
210 North 2nd Street, Suite 104
Minneapolis, MN 55401
[612/436-1151](tel:6124361151)
formandcontent.org
formandcontent@gmail.com



Kenneth Steinbach, *Memoria Animus: Rat Lake, Southern Shore*, 2011-16
Scrimshaw on used piano key ivory, 8" x 10"

Artists in the Exhibition

Robyn Stoller Awend, Christine Baeumler, Arlene Burke-Morgan, Crescent Collective (Laura Bigger, Artemis Ettsen, Teréz Iacovino), Jim Dryden, Elizabeth Erickson, Jil Evans, Camille J. Gage, Leah Golberstein, Jay Isenberg, Vesna Kittelson, Joyce Lyon, John Marshall, Lynda Monick-Isenberg, Clarence Morgan, Marty Nash, Kathryn (Kate) Nobbe, Howard Oransky, Mark Ostapchuk, Steve Ozone, Faye Passow, Jeff Rathermel, Kenneth Steinbach, Sandra Menefee Taylor, Jeff Wetzig, Jody Williams, Cameron Zebrun



Joyce Lyon, *Two Urns in the Floridi Garden*, 2016, graphite, 10 x 10 in.

Description

In 2005 two artists, Robyn Stoller Awend and Camille J. Gage, began a conversation about the possibility of forming a new kind of gallery in Minneapolis. They invited some artists they knew to join the conversation, and they in turn invited some artists they knew. The group began meeting together at the home of Jil Evans and Charles Taliaferro. Three foundational concepts formed the structure of the new gallery. First, the members would have absolute control over the artistic program. Subsequently, the group formed a company for the purpose of running the gallery, and the artist members assumed their parallel roles as owners of the company. Second, the members would trust each other to make decisions that support the goals of artistic quality, experimentation and community-engagement. Third, the gallery would show members' artworks and organize exhibitions with artists and curators from outside the gallery, thereby making a valued contribution to the Minnesota cultural landscape.



Mark Ostapchuk, *Crowns*, 2015, oil on wood panel, 12 x 24 in.

The following mission statement was adopted: "Form + Content Gallery nurtures diverse artistic practice and thoughtful dialogue. We value art as a catalyst for critical thinking. We value integrity and the artistic process. We aspire to link personal expression to broader social contexts. Form + Content Gallery is dedicated to moving the definitions and practice of culture forward in new and lively ways." Doryun Chong, Assistant Curator at Walker Art Center, selected the artworks for the inaugural exhibition *Trace Elements* and Form + Content Gallery opened its door to the public on March 1, 2007.



Jil Evans, *Underfields 18*, 2016, oil on panel, 8 x 10 in.

In the ten years that followed the gallery has presented 85 exhibitions and shown artists from across Minnesota, the United States and around the world. For example, *Modes of Disclosure* (2007) proposed diverse interpretations of sexual identity in the LGBTQ communities. *Dialogue on the Wall* (2007) investigated differing viewpoints on the Israeli/Palestinian conflict. *Unbundling the Housing Crisis* (2009) surveyed the local side of the national housing crisis. *Wee Cabaret* (2011) converted the gallery into an intimate venue for the performing arts. *Illustrators' Studio* (2016) invited 7 prominent illustrators who have ties to the Twin Cities. Form + Content Gallery also published 2 original editions in collaboration with the Minneapolis-based Flying Paper Press: *Intimate Immensity* (2007) a portfolio of prints by gallery members and invited guests and *Connections: 18 Images with a Common Thread* (2012) an artists' book.

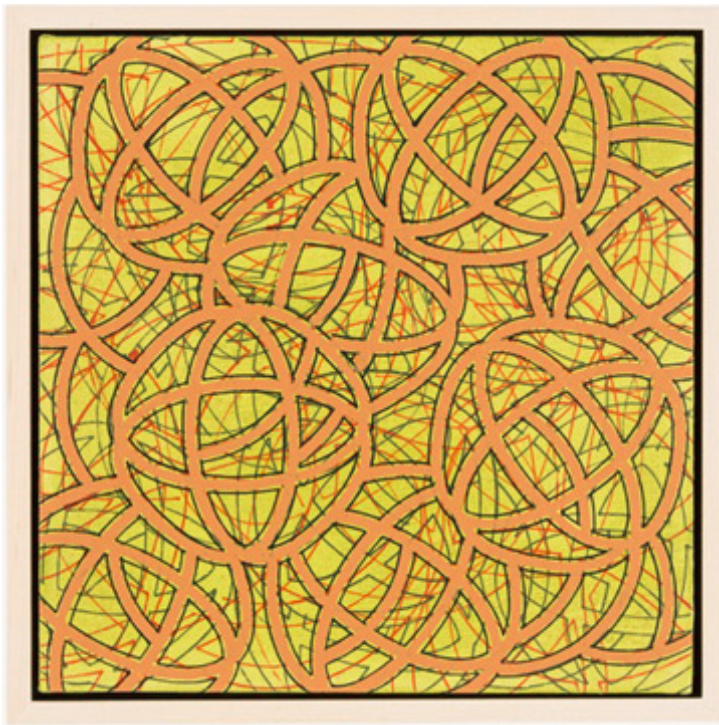


Jody Williams, *Cistellulae Numero Prima*, 2015, Box constructed from bookbinder's board, covered with Japanese kozo and digitally-printed Sakamoto papers, drawing, cast bronze and actual specimens. Open box: 4 x 6 ½ x ½ in.

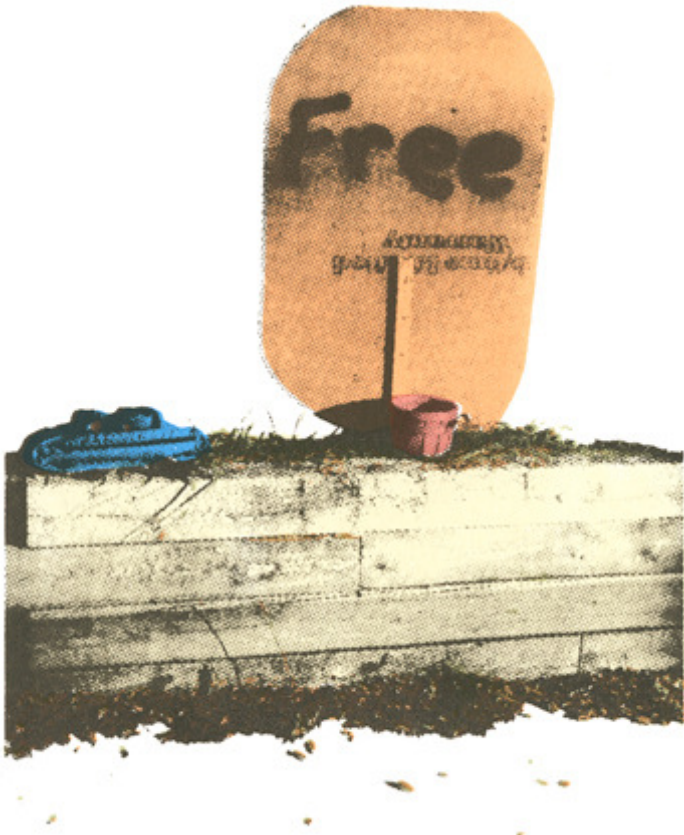
The 10th Anniversary Exhibition serves as a creative reunion for the 30 artists who have made Form + Content Gallery a unique platform for artistic exploration. In reference to the 10th anniversary the artworks in this exhibition measure 10 inches in each dimension, and reflect the variety of media and artistic sensibilities that has characterized Form + Content Gallery across its first ten years.



Robyn S. Awend, *Self Portrait*, 2015, Letterpress, 8 x 10 in.



Clarence Morgan, *Simple Object*, 2016, Acrylic on canvas over panel, 10 x 10 in. Photo: Renee Yamada



Jeff Wetzig, *Lawn Signs: Free*, 2016, Screen Print, 8 x 8 in.



Elizabeth Erickson, *Monarch #2*, 2016, Oil on canvas, 10 x 10 in.

—

Howard Oransky

Director, Katherine E. Nash Gallery
Department of Art, University of Minnesota
405 21st Avenue S., Minneapolis, MN 55455
612/624-6518 <http://art.umn.edu/nash>

ostap001 University of Minnesota <ostap001@umn.edu>
To: Howard Oransky <horansky@umn.edu>

Thu, Dec 15, 2016 at 2:35 PM

Thanks!

[Quoted text hidden]